

USER MANUAL: Exporting Field Boundaries APEX

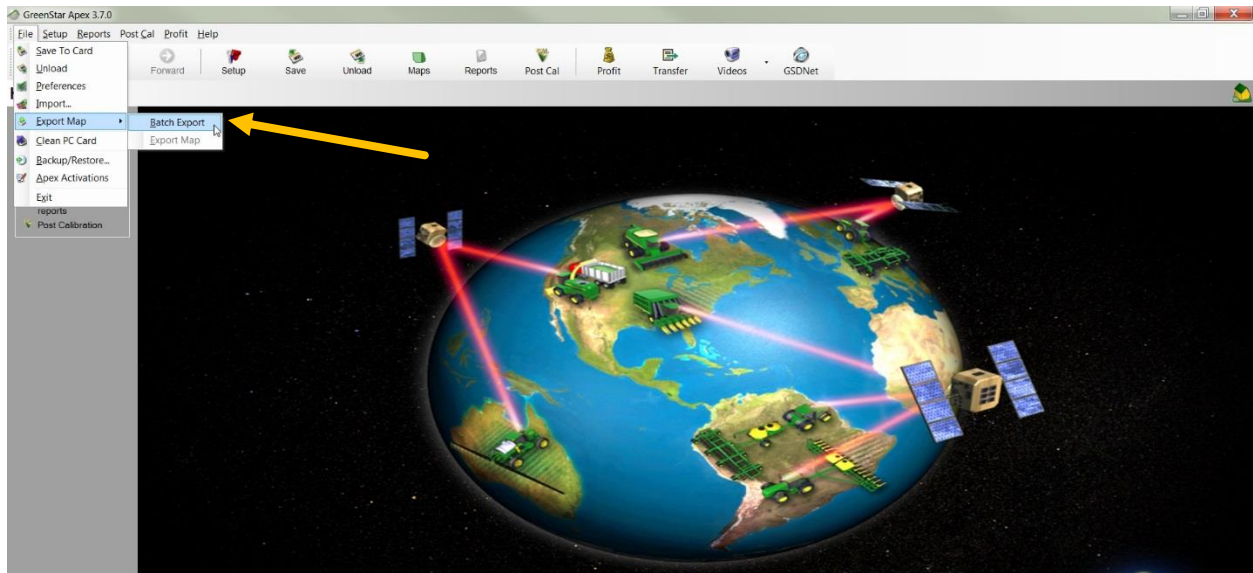
Exporting Maps

Open Apex

To start exporting maps from APEX click “File” scroll down to “Export Map” you will then have 2 options.

- Batch Export – Export multiple maps at once
- Export Map – Export the current map being viewed

Select Batch Export. You will be given batch export options on the next screen.

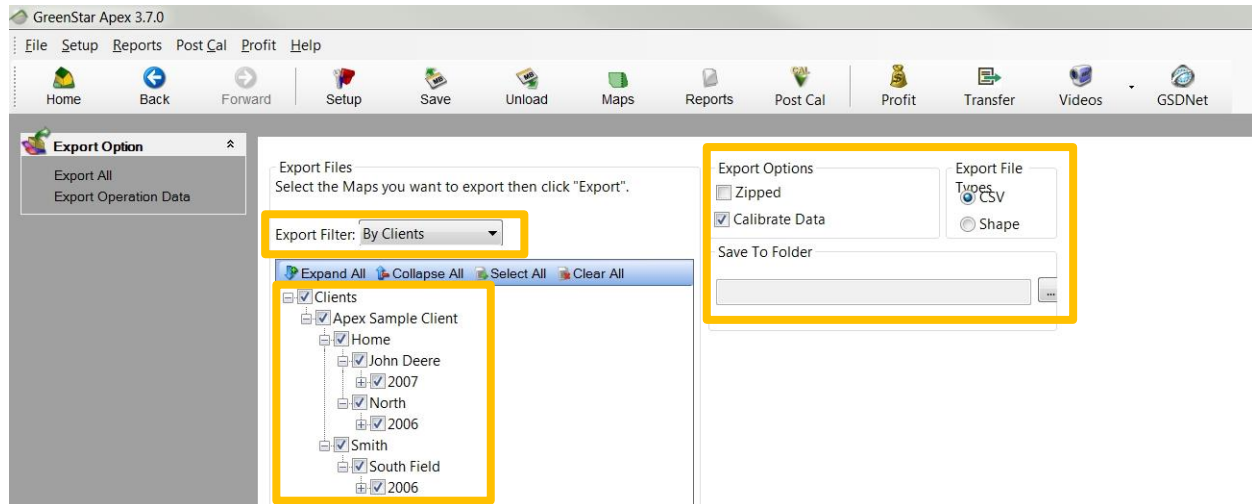


Batch Export Options

Export Filter – The export filter allows you to filter fields by client, operations, boundaries, and surveys. For initial set up in MyAgCentral you will want to choose “By Clients”.

Map Tree – This is where you will pick which clients you want to export information for.

Export Files/Options – Choose the “Zipped” option, uncheck the “Calibrate Data” box then uncheck “CSV” and pick “Shapefile” as the export file type. Here you will also choose where to download the data to. Save the file to your desktop so you can find it easily.



A window will pop up displaying how much time to complete the process.



NOTE: If exporting for multiple clients/growers please group boundary files into folders with the correct client/grower name.

Once the process completes you should see a .zip file on your desktop. Rename the field to reflect the exact “Client/Grower” name that we will use to set up the Grower-Farm-Field hierarchy in MyAgCentral.

Close the APEX software.

Send the .zip file to MyAgCentral as an e-mail attachment