

MyAgCentral 3.1 Release Notes

April 10, 2017

The MyAgCentral 3.1 release includes the following changes and bug fixes.

Home Page:

1. Home Page- Weather Widget- Previously when the zip code was updated to a new location the widget would continuously display the loading spinner. Now when the location is changed on the weather widget it no longer presents a continuous loading spinner.
2. Home Page- Loading- Previously when users associated with multiple organizations with large data sets would login the links widget, weather widget, navigation tree and page would be slow to display. This issue has been addressed and the load time has been improved.
3. Home Page- GFF Express Center- Previously when a Farm or Field was added using the GFF widget, the farm and field would not be displayed in the GFF widget after the add was completed. Now the newly created farm or field is presented in the widget.

My Organization:

1. Organization Navigation Tree – Previously when selecting an organization on the navigation tree, you would have to select the organization a second time for the list and page to display the selection. Now the organization displays on the page the first time it is selected in the navigation tree.
2. Add Grower- To streamline the process and make it easier to add or update growers in My-AgCentral you are no longer required to enter the contact name, phone number, email or address fields.

ADD GROWER Close

Grower Name * Smith Farms

Contact Name

Contact Phone

Contact Email

Source

Note:

Country * USA

Address

Address 2

City

State/Province

Postal Code

County

Requested By

Status * Enabled

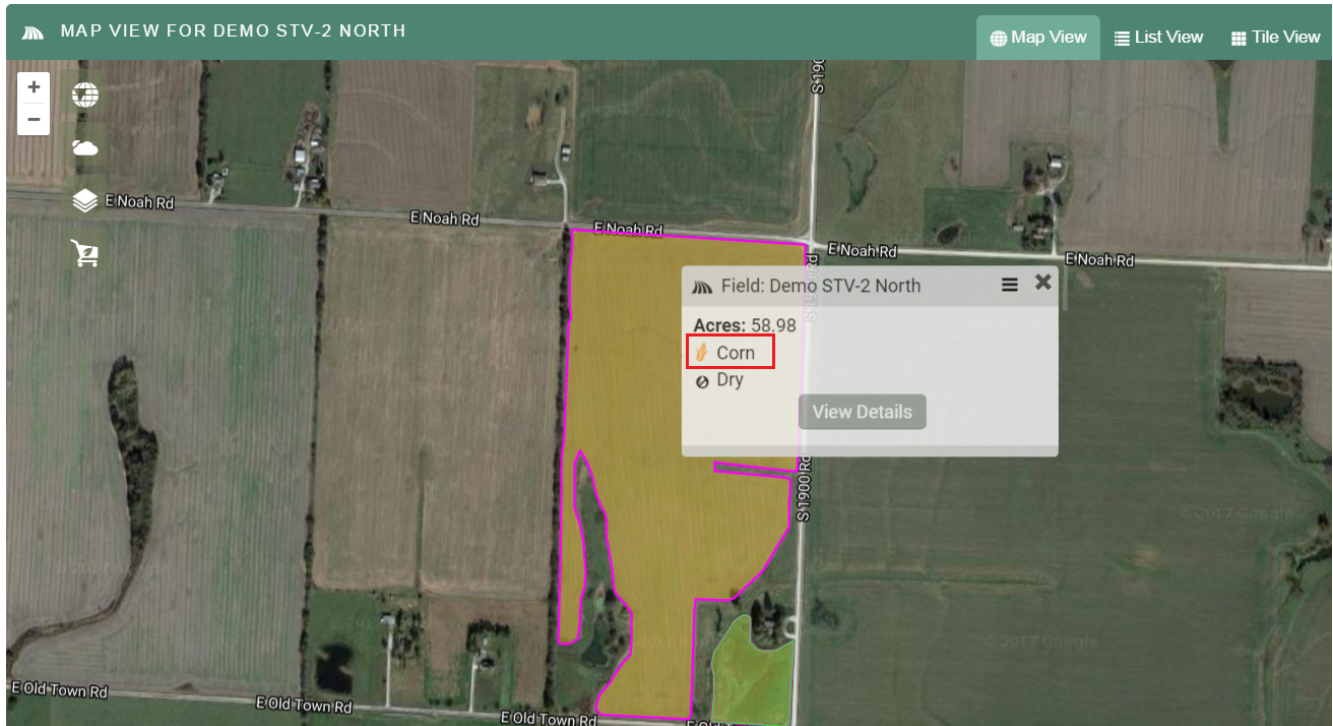
License Type * - Select a License Type -

Auto-Create User * ☐ Yes ☒ No

If Yes is selected, a Login ID will be automatically created and welcome email sent to the Contact Email.

Fields Page:

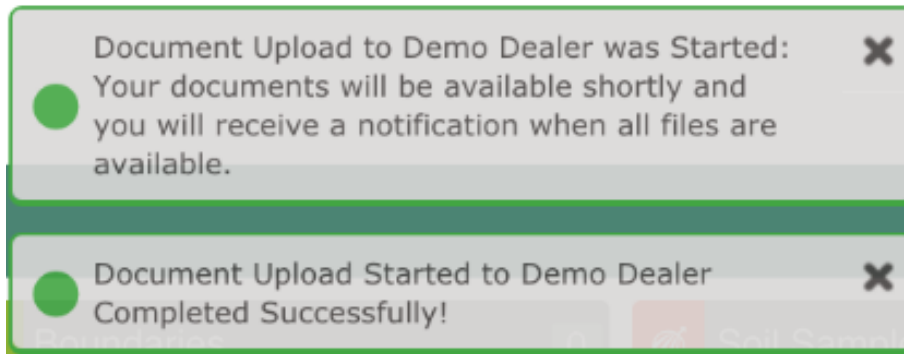
1. Fields Map, List, Tile Pages - Previously when viewing an Asset detail such as a field or machine, if you clicked on an organization in the “breadcrumb” at the top of the page you would be taken to the My Organization page versus remaining on the Fields page. Now when selecting an organization from the “breadcrumb” you remain on the Field Page displaying the organization you selected.
2. Fields Map View- When you drill down to a field on the “map view” the crop type value now displays correctly in the field information box.



3. Field Map View –Previously, on occasion, when an organization was selected from the navigation tree on the Field Map Page, a message would appear stating, "No geo-center for currently chosen hierarchy. Geo-center cannot be set until hierarchy has at least one reference location. Using default center". This message was displayed when the map view was completely zoomed out. Now when you select an organization with fields with boundaries the default center is correctly set and the error message is no longer displayed. Now only organizations with no field boundaries display this message.

Documents Page:

1. Documents Page- Upload – Previously, when a document upload failed to complete the upload would automatically restart. This would potentially cause several copies of the same document to be uploaded. The system no longer automatically restarts the upload of the document each time it fails to complete. Upload start and success completion messages are now displayed when an upload is performed versus displaying the upload indicator.



2. Documents Page- Work Orders- Previously when documents were uploaded as part of a work order step the work order number would not get attached within the documents' details. Now whenever a document is added as part of a work order, the work order number gets attached and is visible in the details section.
3. Documents Page- Delete- Previously, when users were deleting large amounts of files it caused the application to slow down considerably. To allow better handling of deletions only 100 files can be deleted at a time now.

Work Order:

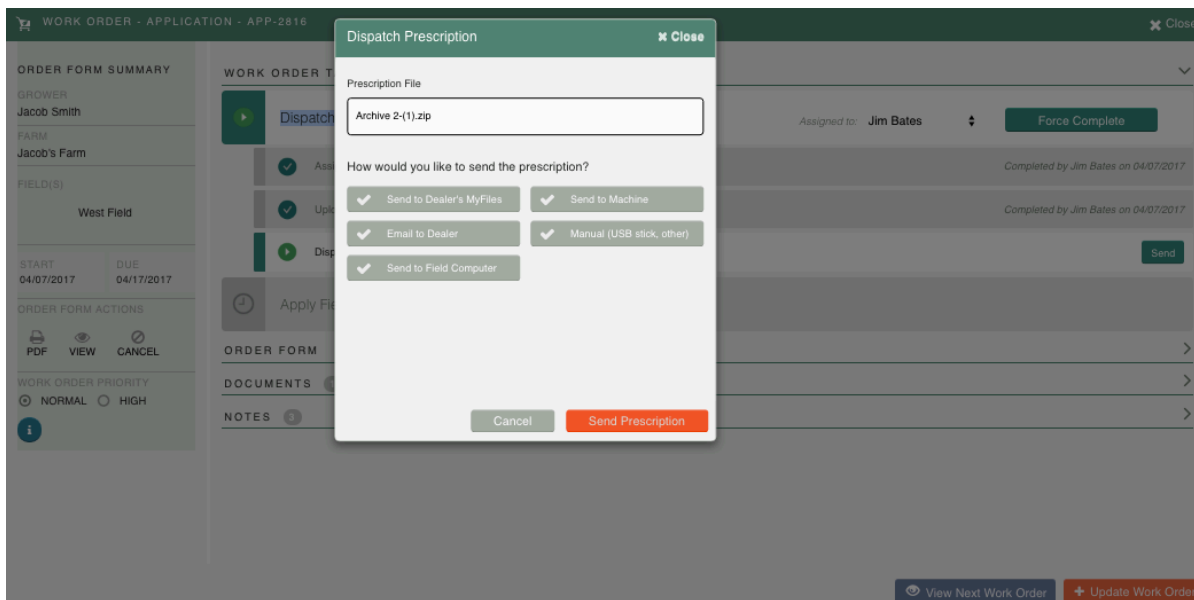
1. Application Work order – An Application work order is now available in MyAgCentral. If an integration to the John Deere Operations Center has been established, the application work flow will utilize the connection to the John Deere Operations Center. If a John Deere integration is not present, a Generic Application work order form is presented where the user can enter the recommendations and product information when creating the work order.

Generic Application Work Order - The Generic Application work order tasks include: “Create Rx”, “Review and Select Recommendation”, and “Dispatch Application”.

The screenshot shows the 'WORK ORDER - APPLICATION - AA-2819' interface. On the left, the 'ORDER FORM SUMMARY' includes fields for GROWER (Baker Farms), FARM (Jim's Farm), FIELD(S) (North Field 1...), START (04/07/2017), DUE (04/17/2017), and WORK ORDER PRIORITY (NORMAL selected). Below these are 'ORDER FORM ACTIONS' (PDF, VIEW, CANCEL) and a status icon. The main 'WORK ORDER TASKS' section lists: 'Create Rx' (UNASSIGNED, Assigned to: [dropdown], Force Complete button), 'Review Agronomist Recommendation(s)' (Open Order Form to Review button, Reviewed status), 'Upload Rx Files', 'Review & Select Recommendation' (PENDING), and 'Dispatch Application' (PENDING). At the bottom are links for 'ORDER FORM', 'DOCUMENTS', and 'NOTES' (1). An 'Update Work Order' button is in the bottom right.

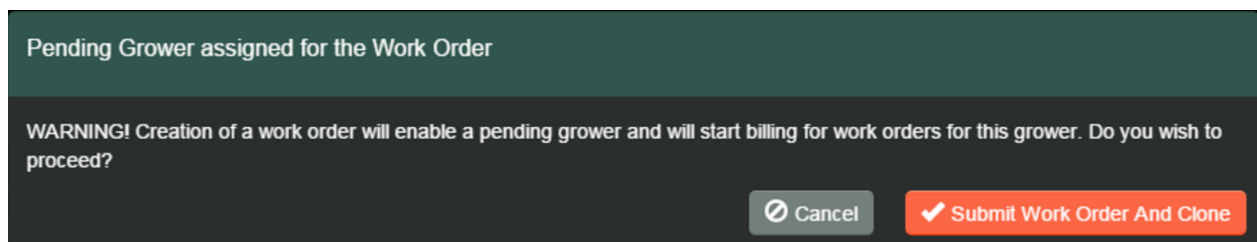
Application Work order with a John Deere integration – This application work order will have different tasks which includes additional options in the Dispatch Rx task: “Send to Dealer’s MyFiles”, “Send to Machine”, “Email to Dealer”, “Manual”, “Send to Field Computer”. When uploading the prescription within the “Dispatch Prescription” step of the work order it must be a zip file for it to complete successfully. Once the application has been completed on the field the last task in the work order “Apply Field” will be completed.

The screenshot shows the 'WORK ORDER - APPLICATION - APP-2816' interface. The 'ORDER FORM SUMMARY' on the left lists GROWER (Jacob Smith), FARM (Jacob's Farm), FIELD(S) (West Field), START (04/07/2017), DUE (04/17/2017), and WORK ORDER PRIORITY (NORMAL selected). The 'WORK ORDER TASKS' section includes: 'Dispatch Rx' (IN-PROGRESS, Assigned to: Jim Bates, Force Complete button), 'Assign Job Responsibility' (Assign button), 'Upload Rx', 'Dispatch Prescription', and 'Apply Field' (PENDING). At the bottom are links for 'ORDER FORM', 'DOCUMENTS', and 'NOTES' (1).



2. Work Orders- Pending Organization- When creating multiple work orders for a pending organization and the “Submit Work Order and Clone” is selected to complete your first work order, you are presented a message stating: “Pending Grower Assigned to a work order – Warning! Creation of a Work Order will enable a pending grower and will start billing for work orders for this grower. Do you want to proceed?”. Previously if you selected to proceed you were then sent to the work order list.

Now if you select “Submit Work Order and Clone” you are no longer sent back to the work order list. You are instead sent to the Add Work Order screen with the Grower, Farm and Field entries filled out from the previous work order. You can then change what you need and add the second work order.



3. Work Orders Page- Previously when selecting the Work Orders Page, the work orders list would take a long time to load. Additionally, when a user viewed the work order detail the verbiage for the steps in the active task would take a long time to display. This issue has been addressed and the slow display time no longer occurs.
4. Work Order Page - On the Work Order list select a work order to view the detail, then close the work order detail to return to the list. Select “Add Work Order” to create a new work order. Previously this would cause the grower, farm and field of the new work order to be populated

with the grower, farm and field of the last work order viewed. This issue has been addressed. The grower, farm and field of the new work order is no longer filled with a previously viewed work order's grower, farm and field.

5. Work Order PDF- Previously, when users selected a work order from the list on the Work Orders Page, then opened the PDF for that work order, selected another work order and opened that PDF, the PDF displayed would be that of the first work order. This issue has been resolved and each time you select the PDF button on a work order it displays the correct PDF.
6. Soil Sample Work Order - When creating a Soil Sample Work order, previously if you uploaded a .zip file in the "Upload Sample Map" field and submitted the work order, then opened the new work order an error message would be displayed. In addition, two sets of Sample Map files would be present in the documents section of the work order. Now when you upload a sample map file, no error is displayed and only one set of files appear in the document section of the work order.
7. Soil Sample Work Order- When creating a Soil Sample Work Order you are given an option to select Yes or No to whether you "Have Soil Samples". If yes is selected you can then upload the samples before submitting the work order. Previously there was an issue where the "Field Ready for Soil Sampling" email was still being sent and the Sample task still assigned to the Soil Sampler when "Have Soil Samples" was set to Yes. Now the Soil Samplers are no longer receive the Ready for Soil Sampling email or assigned the Sample task when the "Have Soil Sample" is set to yes and samples are uploaded during work order creation.
8. Soil Sample Work Order- Previously if a soil sampler was assigned to a work order and they opened their assigned task in the "Task Inbox" they would see the entire work order task list. They would also have to exit and view the task again before it could be completed. This issue has been addressed and now the soil sampler will only see the task he is assigned and can complete it properly.
9. Soil Sample Work Order- Previously within the "Sample" task of the work order, when trying to "Upload Sample Points" the upload would sometimes freeze at 60%. This issue has been addressed and the upload no longer freezes when completing this task.
10. Soil Test Work Order- Occasionally Soil Test work orders were generated automatically when a Soil Sample work order was created. This issue has been addressed and Soil Test work orders are no longer being generated automatically.

Field Activities:

1. New Field Activities entries - John Deere Operations Center Integration - All John Deere operational results including planting, harvest, application, and tillage can now be viewed on the Field Activity widget and page. Previously only Field Activities resulting from John Deere Operations Center jobs would be displayed on the Field Activities page. Please contact the Sage

Insights support team to complete the John Deere integration set up to connect the MyAgCentral fields to the JD Operations Center fields. This is required to pull in the field operational results.

2. Field Activity Actions – New work orders can be created from a Field Activity entry using the Add Work order option in the Actions drop down.

VeggieGardenOrganic310stage	OrganicBeetField3	Application		04/03/2017	–	≡ Actions
VeggieGardenOrganic310stage	OrganicBeetField3	Harvest	Barley	04/03/2017	HARV-2757	≡ Actions
MyAgCentral Grower Test Org	Anderson South	Seeding	Corn Wet	02/14/2017	–	≡ Actions

+ Add Work Order

🔍 View Field Details

📍 View Field Location

Integrations:

Raven Integration

1. Field Computers- Once the Raven integration setup has been completed, Raven Field Computers can be discovered in MyAgCentral. You can then use the Field Computers on various pages throughout the application. Please contact the Sage Insights support team to complete the Raven integration set up.

-Application Work Order -You can now dispatch a prescription file to a Raven Field Computer from an application work order.

Within the “Dispatch Prescription step” of the work order after you select the “Send to Raven Field Computer” a list of Raven Field Computers will be presented to choose from. After the dispatch has been initiated you will receive a message at the top of your screen indicating whether the transfer was successful or not. A note indicating success or failure will also be added to the work order in the notes section.

-Documents Page -You can now transfer a prescription file to a Raven Field Computer from the documents page. The file to be transferred must be a zip file chosen from the “Prescription” category.

Once the Transfer action from the Documents Page is selected, you can then choose the “Send Rx to Raven Field Computer” operation. A list of the available Raven Field Computers is then presented. After the transfer has been initiated you will receive a message at the top of your screen indicating whether the transfer was successful or not.

myAGCentral

Jim Baker

DOCUMENTS - AGRV

Transfer Documents to an External System

Document(s) to Transfer: Archive_2.zip

Select an Operation: Transfer File to Field Computer

Select a Field Computer: Select a Field Computer

Clear Start Transfer


	YEAR	ORGANIZATION	FILE NAME	SEARCH	SUBCATEGORY	DATE	STATE	
<input type="checkbox"/>	2017	North Field 1	Archive 2.zip			03/30/2017		
<input checked="" type="checkbox"/>	2017	AGRAV	Archive_2.zip			03/29/2017		
<input type="checkbox"/>	2017	Baker Farms	Archive 2-(1).zip			03/29/2017		
<input type="checkbox"/>	2017	Baker Farms	Archive 2.zip			03/29/2017		
<input type="checkbox"/>	2017	AGRAV	Archive 2.zip			03/29/2017		
<input type="checkbox"/>	2017	AGRAV	Field_3791_(1) (1) (Field shape files)			03/24/2017		








-Fields Page- You can now view your Raven Field Computers in the List and Tile view and also in the navigation tree under “vehicles”. MyAgCentral does not currently pull Field Computer locations from Raven, so they will not appear on the map.


General:

1. Organization Navigation Tree- Previously on occasion, only a partial list of the organizations would be displayed in the navigation tree on the left side of the screen and you would have to refresh the page to get the entire list to appear. Now the full list of organizations is displayed in the navigation tree when accessing a page without a refresh.
2. Organization Navigation Tree- When using the organization navigation tree to find a grower, farm or field, if you select several organizations rapidly the navigation tree no longer flickers continuously. Previously, on occasion the organization tree would flicker between several organizations within the tree.
3. Notifications- A notifications dropdown has been added to MyAgCentral. The bell icon in the upper right corner of the home page when clicked presents a list of notifications. The bell will have a number over it to indicate how many notifications you have not viewed.





Jim Baker


HOME
FIELDS
MY ORGANIZATION
USERS
SERVICE/SUPPLIER
TASK INBOX
WORK ORDERS
FIELD ACTIVITIES
DOCUMENTS
MARKETS
WEATHER

NOTIFICATIONS
Close

DATE

Mar 30, 2017	5:49PM		AA-2718 - Review Recommendation Prescription Task Available	
Mar 30, 2017	2:36PM		AA-2718 - Prescription files are available for Review	
Mar 30, 2017	2:19PM		AA-2718 - Review Agronomist Recommendations Task Available	
Mar 29, 2017	5:20PM		Document Upload Started to AGRV Completed Successfully!	
Mar 29, 2017	10:27AM		Document Upload Started to Baker Farms Completed Successfully!	
Mar 29, 2017	10:08AM		Document Upload Started to Baker Farms Completed Successfully!	
Mar 29, 2017	10:07AM		Document Upload Started to AGRV Completed Successfully!	
Mar 24, 2017	12:10PM		Document Upload Started to OrgName Completed Successfully!	
Mar 23, 2017	10:46AM		Document Upload Started to AGRV Completed Successfully!	

- The MyAgCentral logo has been changed. The new logo will appear wherever the previous logo was presented.

